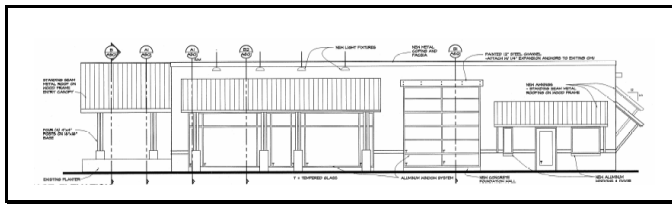


# Great Lakes Children's Museum



45th Parallel Construction Management, Inc. (45cm) was selected by the Great Lakes Children's Museum (GLCM) to provide professional construction management services for the planning, design, fundraising, bidding and construction phases for this project.

The GLCM decided to relocate their facility from the Traverse City Front Street location to the M-22 location in Greilickville after high lease rates made it financially impossible for them to remain at the Front Street site.

The Greilickville site was offered to the museum as part of a land, building and waterfront package by Mike Dow. Three other non-profit organizations will also utilize the package donated for use by Mr. Dow.

The GLCM requested design professionals, contractors and other volunteers to assist with renovation of a 5,500 square foot facility on the Dow property. 45cm decided to donate services to manage this project in conjunction

with Cornerstone Architects and the design team.

With a very limited budget, the design and construction team needed to work closely together and provide value engineering during the design phase to keep the project workable. This was a challenging project given the coordination and communication required with the donated design and construction, and 45cm was very fortunate and proud to be a part of it.

## PROJECT PROFILE

Great Lakes Children's Museum Traverse City, MI	
Architect:	Cornerstone Architects John Dancer, AIA
Project Type:	Museum
Materials:	CMU bearing walls Steel joist/deck roof Rough sawn canopies
Building size:	5,500 SF Total Area
Contact:	John Noonan Executive Director (231) 932-4526
Complete project cost:	\$250,000
Cost per square foot:	\$45
Completion date:	July 2006



Completed Building